

Coffee Corner

The Coffee Corner is the multifunctional device par excellence for mass catering. It combines 4 powerful applications in a single device:

- 1) Connection of any coffee machine and payment by badge or EFT
- 2) Connection of a refrigerator or vending machine
- 3) Nano Market: self-service laid out products
- 4) Loading your employee ID card with credit and debit cards

The various applications can be used - you only pay for what you effectively use (pay per use).

The Coffee Corner is a unique concept for new-vending. With one device so many functions can be

executed as never before. The device is the central control unit for three completely different points of sale in the Corner.

This will increase sales by greatly expanding the range of products.

In addition to coffee, suitable products can be offered, either taken from the refrigerator or from shelves provided.



Various POS - one central payment terminal

All products can be conveniently paid for without cash. Several options are available for this purpose, which integrate perfectly into the existing environment.

Coffee maker:

You select the coffee at the table top coffee machine and pay cashless. This eliminates the need for a separately installed payment system. MDB and CCI interface can be integrated.

Refrigerator:

You select the desired product on the Coffee Corner touch screen. With the payment, the refrigerator unlocks and you remove the product.

Self-service:

A number of freely available items such as fruit or snacks can be purchased as self-service in addition. Select the desired product in the Coffee Corner touchscreen and pay cashless as well.



Payment methods

The Coffee Corner supports various payment methods that fit perfectly into existing solutions

- Existing chip: Use the already existing payment method. The existing reader technology can be easily integrated into the device
- Existing employee ID card: The ID card for access and time recording can also be used for payment. For this purpose, either a wallet is encoded on the chip or an online debit procedure with a central server is used.
- Debit and credit cards EFT: Use of major cards as well as Apple Pay, Google Pay, etc.
- Credit solution closed loop: the existing ID card is used to identify the employee so that payment is processed through payroll.
- Mobile closed loop: The system is prepared for payment by cell phone.

Of course, we also supply new RFID keycards or virtual transponders on the mobile phone for your individual closed loop wishes.

Ordering coordinates:

Art.no.: CC.10.120.00

Designation: Coffee Corner RFID EFT

Coffee Corner Legic/ Mifare/Mobile
with Paytec Terminal

CC.10.110.00

Coffee Corner RFID EFT

Coffee Corner Legic/ Mifare/Mobile
without Paytec terminal



HUG-WITSCHI AG
ELECTRONIC ENGINEERING

Auriedstrasse 10 - CH-3178 Bösingen
phone +41 (0) 31 740 44 44 - fax +41 (0) 31 740 44 45
info@hugwi.ch - www.payment-technology.com

Compact Loader

take off to a new horizon



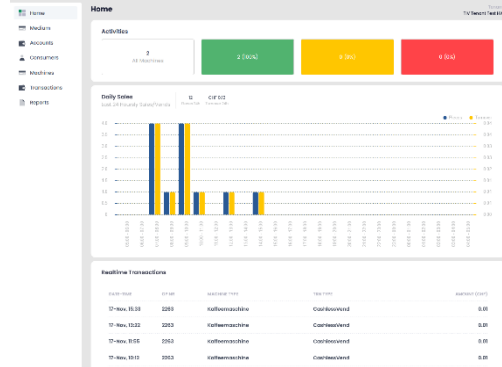
Advantages

The Coffee Corner is the entry-level device to the Micro Market and thus the door opener for your customers for the integrated vending and retail business.

Thanks to the well-known DIVA2 technology, the system is very easy to master and perfectly complements traditional vending. The Coffee Corner is not a foreign body in vending machine technology, therefore no specialists are needed to operate the system.

Thanks to the built-in DIVA2 controller, existing billing solutions are supported and connections to cash registers via the network are possible. A connection to the in-house cloud solution TIV is even easier, as no local installation is required. TIV offers comprehensive reporting and perfect control of your payment application.

The device is monitored via integrated remote maintenance and software updates or configuration changes can be applied without having to be on site.



- Entry model to Micro Markets in the lower and medium price segment
- Ideal complement to existing vending machines
- Support of existing closed loop payment system as well as the common EFT terminals on the market
- Intuitive operation via color 7" touch tablet.
- Multilingual user interface (DE, FR, EN, IT, ESP)
- Versatile data and billing interfaces. Fits ideally in plants which are equipped with DIVA (networking, billing).
- Telemetry via LAN and GSM (LTE): SW updates, billing and maintenance
- Best-in-class price/performance ratio

Upgrade chip

- Loading of data carriers of all payment systems via credit and debit cards with the same functionality as Compact Loader EFT
- Alternative upgrade via Webload /App (TIV)

Accounting

The device supports the billing formats totals (EVADTS) and single transactions.

- Output totals accounting (EVADTS) on NFC, IrDA or network
- Automatic data transfer of the accounting via cloud server
 - eMail with pdf attachment
 - directly into existing vending accounting software (Vendidata, Digisoft a.o.)
- Connection to TIV (Totally Integrated

DIVA Abrechnung OP-Nummer 2260
Projekt spezifischer Text aus Konfiguration
Abrechnungsnummer 3 von 18.01.2017 bis 18.01.2017

BARGELDREISTAND		UNSATZE ZAHLUNGSSYSTEME		GESAMTUNSATZE (SEIT INIT)	
Kassastand	0.00	Umsatz Bar		Gesamtumsatz Automatik	
Tafelstand		Umsatz Bargeldlos		Gesamtumsatz Debitkystem	
Nelaststand	40.00	Umsatz Aufhaben	40.00	Gesamtumsatz Aufladen	100.00
Anzahl Minikartizen		Umsatz Schenkungen		Gesamtumsatz Schenkungen	
Sandl Wertloken		Umsatz Bonus		Gesamtumsatz Bonus	
		Umsatz Produktbehalte		Total verkaufte Einheiten	
		Umsatz Token			

NOTENBERICHT			
Nr.	Notenwert	Anzahl	Summe
0	5.00	4	20.00
1	10.00	2	20.00
2	20.00	0	0.00
Summe		6	40.00
DNK Summe			40.00

Fig. 1 Example of billing by mail

- Vending) Cloud back office for flexible reporting
- Online and offline connection to third party back office systems via Spider (online/offline)

EFT terminal

Paytec UPT1000 Contact+Contactless and PIN on Glass (CH: Maestro, all credit cards, Postfinance, Lunch Check), Ingenico self Linie, CCV inSync, Feig, Nayax ONYX, WiPay (MDB+)

Ordering coordinates:

Art.no.:CC.10.220.01

Designation: Coffee Corner MDB EFT
Coffee Corner MDB with TerminalTerminal

CC.10.210.01

Coffee Corner MDB EFT
Coffee Corner MDB without



HUG-WITSCHI AG
ELECTRONIC ENGINEERING

Auriedstrasse 10 - CH-3178 Bössingen
phone +41 (0) 31 740 44 44 - fax +41 (0) 31 740 44 45
info@hugwi.ch - www.payment-technology.com

Compact Loader

take off to a new horizon



If networking via LAN, inquire about the ports that must be available (terminal and cards dependent)

Remote maintenance

- Network connection via LAN or GSM (router integrated as standard)
- Remote access for fault diagnosis or adjustment of settings
- SpiderCloudServices: Telemetry system for
 - billing EVADTS, real time transactions,
 - firmware update for DIVA system, RFID OS, Display UX
 - error and transaction log.

Technical data

Material:	1 mm steel sheet
Weight:	ca.8 kg
Door, lock:	Single closure
Color:	Anthracite
Power supply:	Via coffee machine (MDB, CCI)
Credit card terminal:	CH: Paytec UPT1000, Ingenico self Other countries: Terminal installed by dealer
Controller:	LeX2i or DIVA2 Base
Router:	Teltonika RU951: 4xLAN, GSM LTE, Wlan
Network WAN:	LAN, GSM 4G, Wlan. Ports: 80, 13000 (Spider Backoffice), EFT: Ask terminal manufacturer
Payment system:	- Legic/ Mifare/ Mobile directly integrated - optional: MDB card reader
Display:	Industry 7" LCD Tablet with Android 11, 1024x600
Theft protection:	Kensington
Dimensions:	320 x 290 x 200 mm (W x H x D)

Article

Legend: "without" = delivery without this unit, the customer installs himself

Hardware (purchase):

Article	Designation	Addition	RFID reader	EFT terminal
CC.10.120.00	Coffee Corner RFID EFT	Corner Legic/ Mifare/ Mobile with EFT Terminal Paytec	Dragon	Paytec
CC.10.210.01	Coffee Corner MDB EFT	Corner MDB without EFT terminal	MDB	without
CC.10.220.01	Coffee Corner MDB EFT	Corner MDB with EFT Terminal Paytec	MDB	Paytec
CC.10.110.10	Coffee Corner RFID EFT	Corner Legic/ Mifare/ Mobile without EFT terminal	Dragon	without
CC.10.100.00	Coffee Corner RFID	Corner Legic/ Mifare/ Mobile	Dragon	-
CC.10.004.11	Wall kit	To Compact Loader Desk	-	-

Other combinations on request

Ordering coordinates:

Art.no.:CC.10.220.01

Designation: Coffee Corner MDB EFT
Coffee Corner MDB with Terminal

CC.10.210.01

Coffee Corner MDB EFT
Coffee Corner MDB without



HUG-WITSCHI AG
ELECTRONIC ENGINEERING

Auriedstrasse 10 - CH-3178 Bödingen
phone +41 (0) 31 740 44 44 - fax +41 (0) 31 740 44 45
info@hugwi.ch - www.payment-technology.com

Compact Loader

take off to a new horizon



Services (rent):

Article	Designation	Description
CC.10.080.01	Coffee Corner Service Upgrade	Load badge function via EFT terminal
CC.10.080.02	Coffee Corner service payment system	Using badge and EFT to pay at coffee machine
CC.10.080.03	Coffee Corner service refrigerator	Control door lock of the connected refrigerator or product dispensing via Remote Dispense (MDB).
CC.10.080.04	Coffee Corner service self-service	Sale of freely available products

Settlement quarterly in advance

Options

- HW.49.060.01 Maintenance Compact Loader EFT light
- NU.01.070.01 TIV Project initialization
- D2.51.000.01 IR Exe s7.3
- HW.49.080.20 Spicls EVADTS service monthly
- HW.49.080.21 Spicls billing by mail (3)
- HW.49.080.12Spicls LOGS service, one-time connection fee

Ordering coordinates:

Art.no.:CC.10.220.01

Designation: Coffee Corner MDB EFT
Coffee Corner MDB with
TerminalTerminal

CC.10.210.01

Coffee Corner MDB EFT
Coffee Corner MDB without



HUG-WITSCHI AG
ELECTRONIC ENGINEERING

Auriedstrasse 10 - CH-3178 Bödingen
phone +41 (0) 31 740 44 44 - fax +41 (0) 31 740 44 45
info@hugwi.ch - www.payment-technology.com